



TOP HOMES

YOUR KEY TO YOUR DREAM HOME

The South's Newest Premium Residential Village

Experience luxurious living in this exclusive gated community, surrounded by lush landscapes and pristine natural surroundings. This neighborhood offers top-notch amenities such as a central park, clubhouse and a man-made lagoon. The perfect balance of relaxation and recreation.

The Enclave Alabang bears the hallmark of exceptional living.





HARPER

YOUR TROPICAL SANCTUARY IN THE SOUTH

Escape to your own tropical paradise with **HARPER**, a stunning house designed to immerse you in the beauty of nature. Inspired by the lush, tropical surroundings, this home boasts an abundance of natural light and ventilation that floods every corner of the home with warmth and vibrancy.



HARPER
YOUR TROPICAL SANCTUARY IN THE SOUTH



A stunning home that seamlessly blends modern design with nature-inspired elements. Crafted by the most talented architects and designers, HARPER offers a spacious and airy living experience that truly captures the essence of tropical living.



LA: 350 sqm
FA: 500 sqm



7
Bedrooms



7
Toilet & Bath



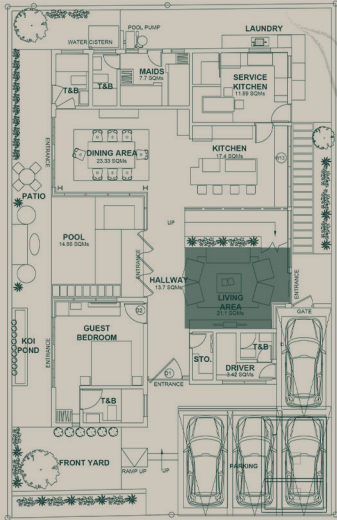
4
Parking

Other Features:

- Plunge Pool
- Lanai
- Koi Pond



LIVING AREA



Artist's Illustration

Ground Floor Plan

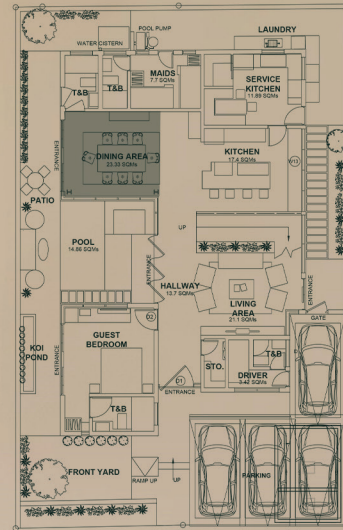
Relax and unwind on your plush sofas, soak up natural light from the windows, and enjoy the seamless flow between indoor and outdoor living. This is the ultimate space to feel at home and create unforgettable memories.



Artist's Illustration



Artist's Illustration

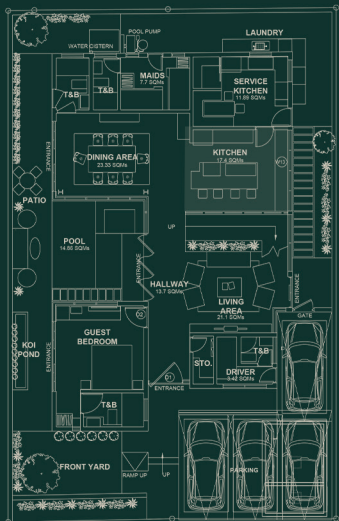


Ground Floor Plan

DINING AREA

The perfect blend of modern elegance and cozy charm, this space is crafted for intimate dining and entertaining. With sleek finishes, warm lighting, and breathtaking views. You and your guests will never want to leave this luxurious retreat.

Step into your modern kitchen and feel right at home. You'll love preparing meals in this luxurious space. Whether you're cooking for family or entertaining guests, this kitchen is the heart of the home.

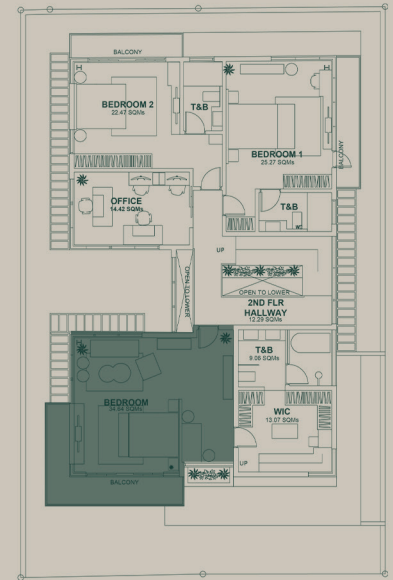


Ground Floor Plan

KITCHEN



Artist's Illustration



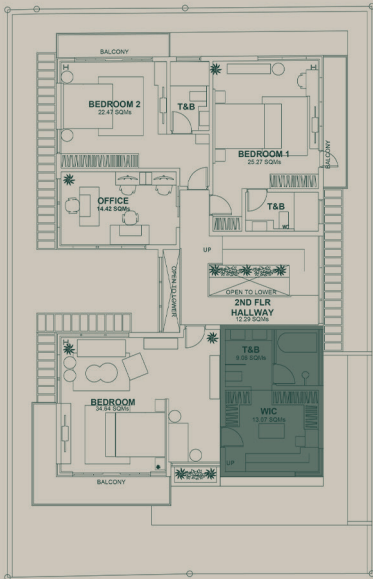
Second Floor Plan

MASTER SUITE

This spacious room features a stylish en-suite bathroom with bi-level walk-in closet and large windows that let in natural light and offer stunning views of the surrounding area. Perfect for that sought after rest after a long day's work.



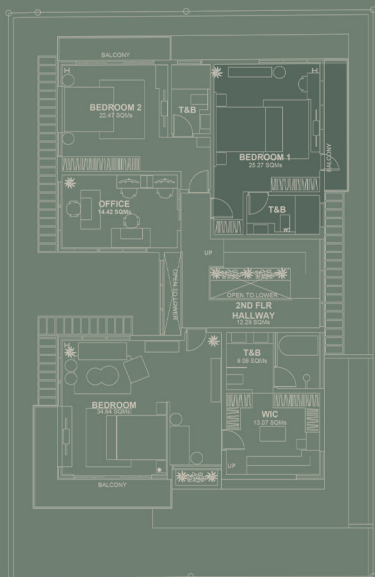
MASTER T&B AND BI-LEVEL WALK-IN CLOSET



Second Floor Plan

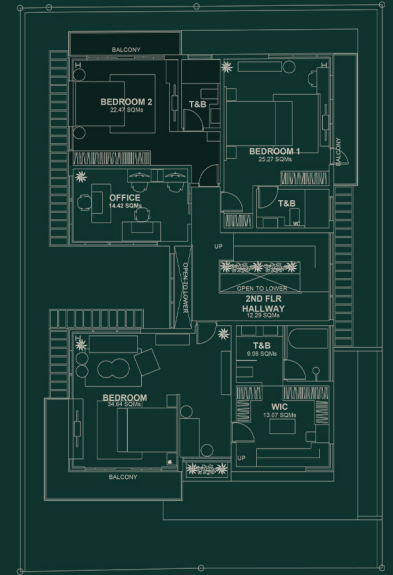


JUNIOR MASTER SUITE



Second Floor Plan





Second Floor Plan

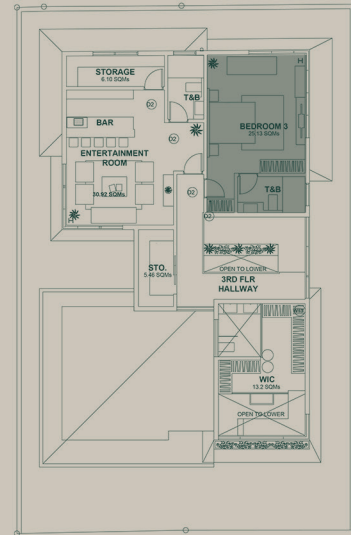


BEDROOM TWO



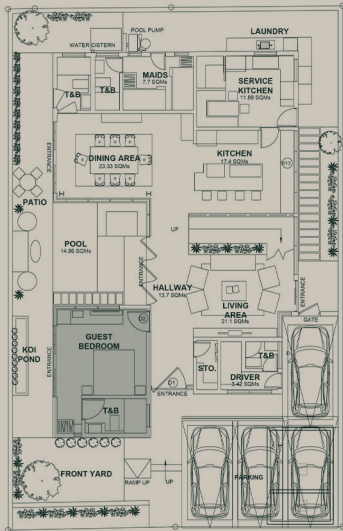


BEDROOM THREE



Third Floor Plan

GUEST BEDROOM



Ground Floor Plan





Artist's Illustration

ENTERTAINMENT AREA AND BAR

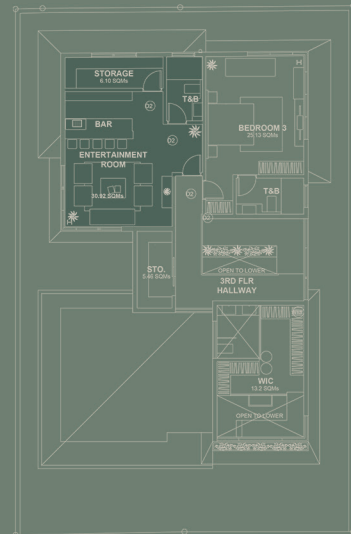


Artist's Illustration



Artist's Illustration

From movie nights to game days, the entertainment area will elevate your home to the next level. Come indulge in your favorite hobbies and spend quality time with loved ones in this multipurpose space.



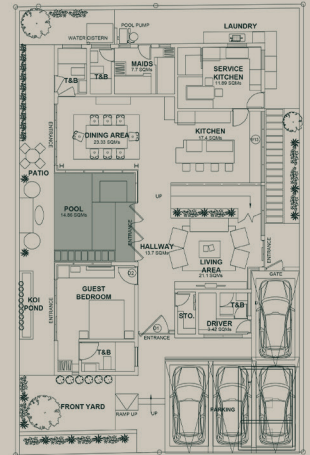
Third Floor Plan

PLUNGE POOL AND LANAI



Artist's Illustration

Ground Floor Plan



Whether you're soaking up the sun, enjoying a BBQ, watching your kids play, or just relaxing after a long day, the pool and lanai is the perfect place for ultimate family fun and relaxation.

OFFICE DEN



Designed for both comfort and productivity, this space is sure to inspire your best work yet. Whether you're a busy professional or an accomplished entrepreneur working from home, this office area is the ideal place to get things done.

Home Features and Finishes

Home Features	Fixtures & Finishes
Modern Architectural Design	Solid Narra Wood Front Door
Double-Height Ceilings	High-Grade Porcelain Tiles
Impressively Sized Living Spaces	3.4-Meter-High Luxurious German uPVC glass windows and sliding doors
Seamless Indoor-Outdoor Design	12mm-Thick Glass Railing and Canopy
Beautifully Landscaped Pool and Lanai	Stone Coated Roofing
Reflecting Pond / Koi Pond	Sustainable Bamboo Wood Flooring, Decking and Exterior Wall Cladding
2 Living Areas (Formal and Informal)	Imported Natural Wood Balcony Wall and Ceiling Cladding
Show Kitchen	Solid Wood Planks on Main Staircase
Daily Kitchen	Natural Stone Accent on Pool and Falls
Spacious Master Suite with Walk-In Closet	Wi-Fi Controlled Pool RGB Lights
Junior Suite with mini Walk-In Closet	Custom-Built Modular Cabinets
5 Bedrooms, including an Accessible Bedroom (wheelchair access)	Quartz Kitchen Island Countertops
6 Full Bathrooms	ELBA Kitchen Appliances
Entertainment Room / Office	GROHE and KOHLER Bathroom Fixtures
2 Sizeable Balconies	DAIKIN Inverter Air Conditioning Units
Separate Helper's and Driver's Quarters, each with own T&B	Quality lighting design and fixtures
5-Vehicle Carport	Provision for CCTV



T H E
ENCLAVE
A L A B A N G

Nothing beats spending a day hanging out with friends or loved ones. With The Enclave Filinvest Premiere amenities, relaxation is something that can be enjoyed not only by your own family but with neighbors and friends.



Main Gate

- Main Avenue with canopy trees
- Landscaped rotunda to the Park



Central Park

- Children's Playground
 - Watch Tower
- Canopied seating area



Lagoon

- Man-made water feature



Clubhouse

- Rooftop Garden
- Private Function Rooms
- Fitness Center
- Kiddie Pool
- Lap Pool
- Changing Rooms

THE NEIGHBORHOOD

Enjoy a quiet and secure neighborhood, while still being conveniently located near the bustling city center. Come and indulge in the ultimate upscale lifestyle at The Enclave Alabang.



NOTABLE DESTINATIONS

-  **Daang Hari MCX Exit**
Estimated: 5 mins. drive
-  **SLEX-Alabang Exit**
Estimated: 14 mins. drive
-  **Filinvest Exit**
Estimated: 16 mins. drive
-  **Makati Business District**
Estimated: 32 mins. mins drive
-  **BGC Business District**
Estimated: 34 mins. mins drive

SCHOOLS

- San Beda College-Alabang
- De La Salle Zobel - Ayala Alabang
- De La Salle Zobel - Vermosa
- Paref Woodrose

TRAVEL TIME

- 13 mins.
- 10 mins.
- 20 mins.
- 4 mins.

COMMERCIAL ESTABLISHMENTS

- Evia Lifestyle Center
- Alabang Town Center
- Festival Mall

- 4 mins.
- 11 mins.
- 16 mins.

HOSPITAL

- Asian Hospital & Medical Center

- 17 mins.

LEISURE DEVELOPMENT

- Southlinks Golf Club
- Alabang Golf and Country Club
- Orchard Golf & Country Club

- 8 mins.
- 6 mins.
- 20 mins.



About Top Homes

Top Homes brings a new vision to luxury residential living in the Philippines. Founded by a team of highly reputable and experienced real estate professionals, we pride ourselves in selecting and building nothing but top homes that inspire you to unlock your dreams and live your best life ever.



Scan QR Code
for Top Homes website

HARPER

YOUR TROPICAL SANCTUARY IN THE SOUTH



Unit 2217, 22nd Floor,
High Street Corporate Plaza Tower 1,
26th St., Fort Bonifacio Taguig City,
1634 Metro Manila, Philippines

 0917 681 1188

 @officialtophomes
www.tophomes.com.ph