




# TOP HOMES

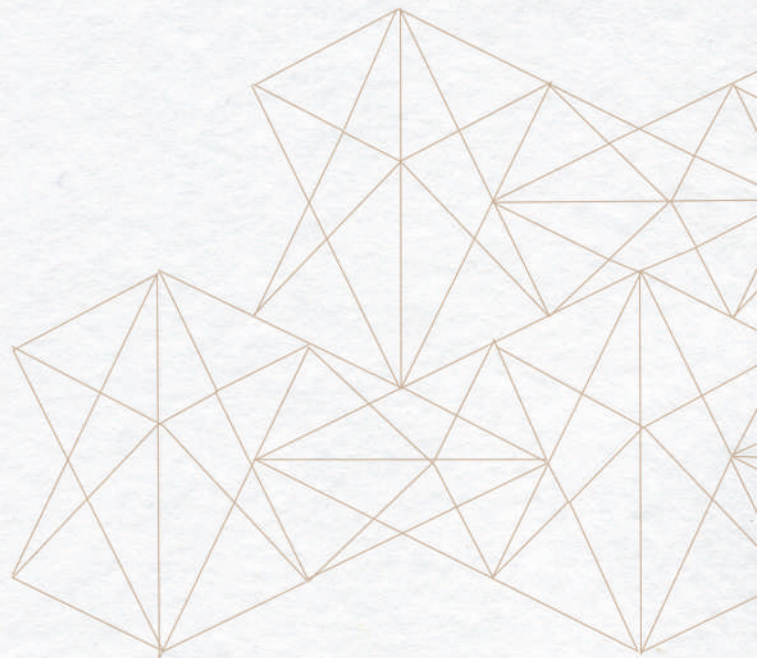
YOUR KEY TO YOUR DREAM HOME





# Welcome to your Dream Home

The glitz and glamour of Beverly Hills can now be found in Manila's very own South, with high-end shopping boutiques and world-class amenities all nestled in one exclusive community.





## Your posh neighborhood in the South

Strategically located at the heart of Alabang's high-end communities and golf course, this 62-hectare prime property situated near Ayala Alabang Village and the booming Alabang business district will have a 1.3-kilometer commercial and retail row inspired by Hollywood's famous Rodeo Drive.



An uncompromising design vision created in collaboration with the most talented architects and designers, your dream home evokes a sense of balance and beauty, epitomizing luxury living at its finest.

# the hamilton

Your Beverly Hills mansion nestled in the Alabang West



LA: 323 sqm  
FA: 659 sqm



6 Toilet & Bath

#### Other Details:

- Formal and Informal Living Area
- Main and Auxilliary Kitchen
- 2 Service Quarters



5 Bedroom



5 Car Garage



Entertainment  
Room



Swimming Pool



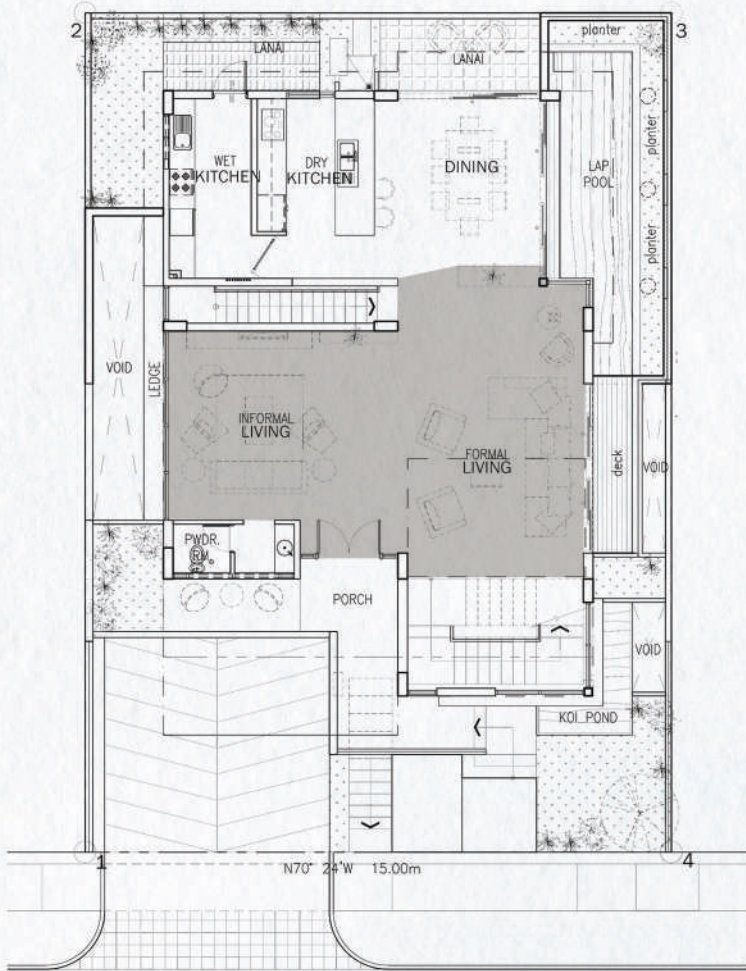
# The Living Area

Life is moments shared with friends and family. With more than enough space for two living areas, there's always a reason to bring everyone together.



INFORMAL LIVING AREA





Upper Ground Floor Plan

"THE LIVING ROOM SHOULD BE A PLACE WHERE WE FEEL TOTALLY AT EASE - TEMPLE OF THE SOUL."

- Terence Conran



FORMAL LIVING AREA

# The Dining and Kitchen Area



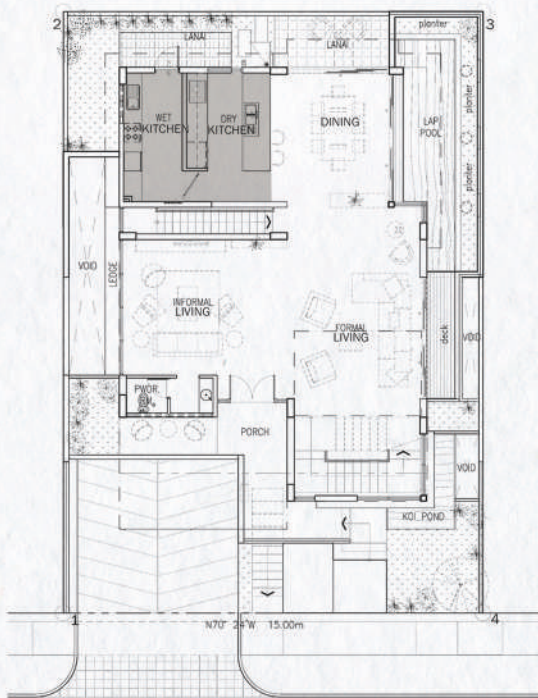
DINING AREA

The fondest memories are made when gathered around the table or preparing meals together. An open dining and kitchen layout allows everyone to gather, eat, laugh and bond.





MAIN KITCHEN



Upper Ground Floor Plan

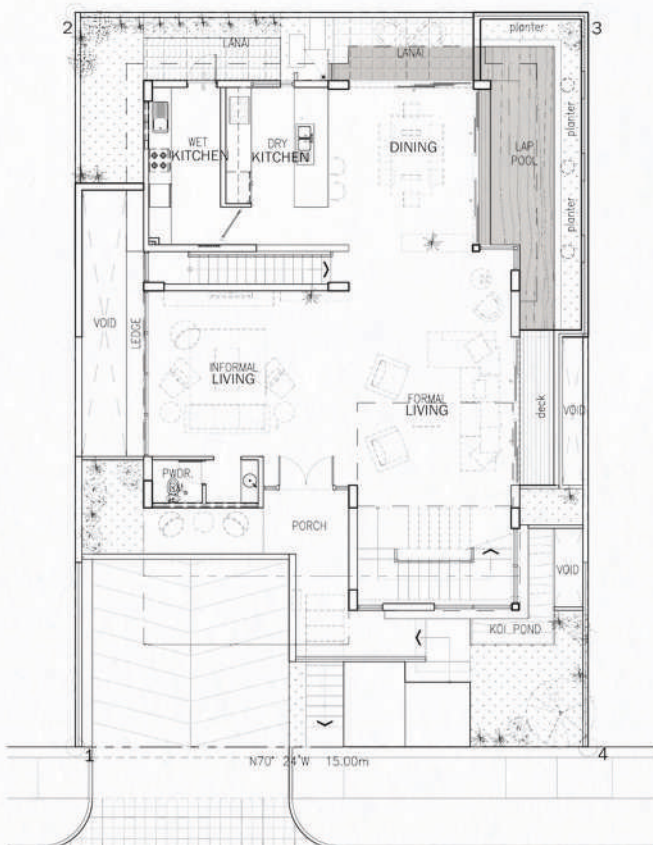


AUXILIARY KITCHEN

"THE KITCHEN IS THE HEART OF EVERY HOME."

- Debi Mazar

# The Swimming Pool and Lanai



Upper Ground Floor Plan

Home is a place to relax, unwind and enjoy's life little pleasures with your own swimming pool, spacious lanai, and beautiful koi pond.

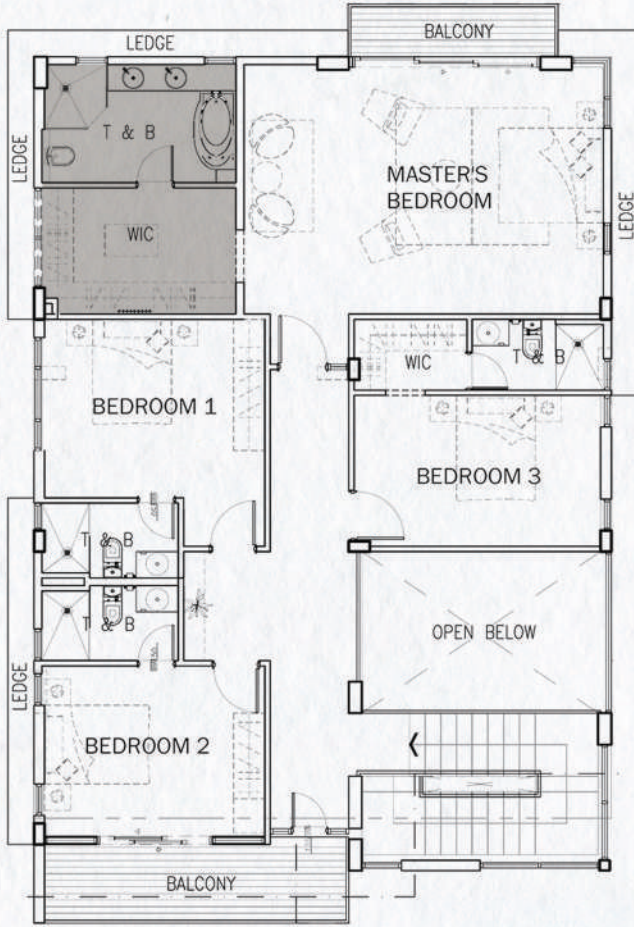


Second Floor Plan

# The Master Suite



Spacious, elegant and modern –  
this master bedroom embodies the luxurious lifestyle you deserve.



Second Floor Plan

The master suite features a bright and modern ensuite toilet and bath with double sink vanity and a freestanding bathtub, as well as an enclosed walk-in closet for that ultra luxurious vibe.

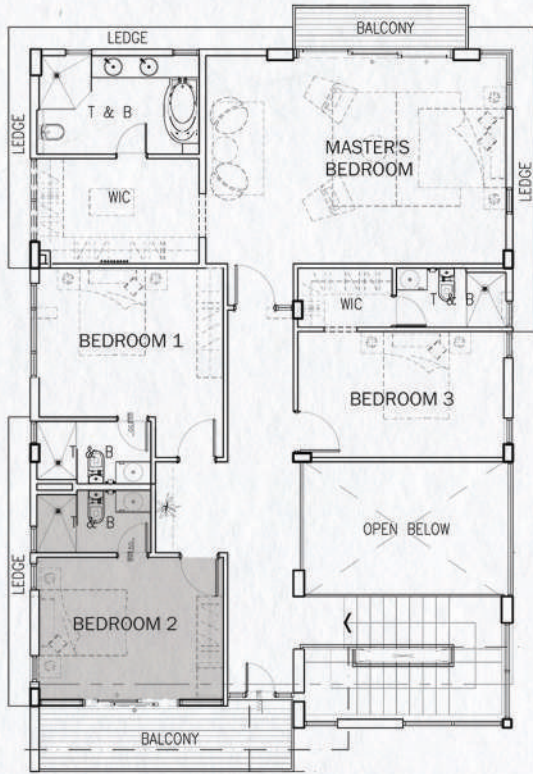


# Bedroom 1



Second Floor Plan





Second Floor Plan

## Bedroom 2





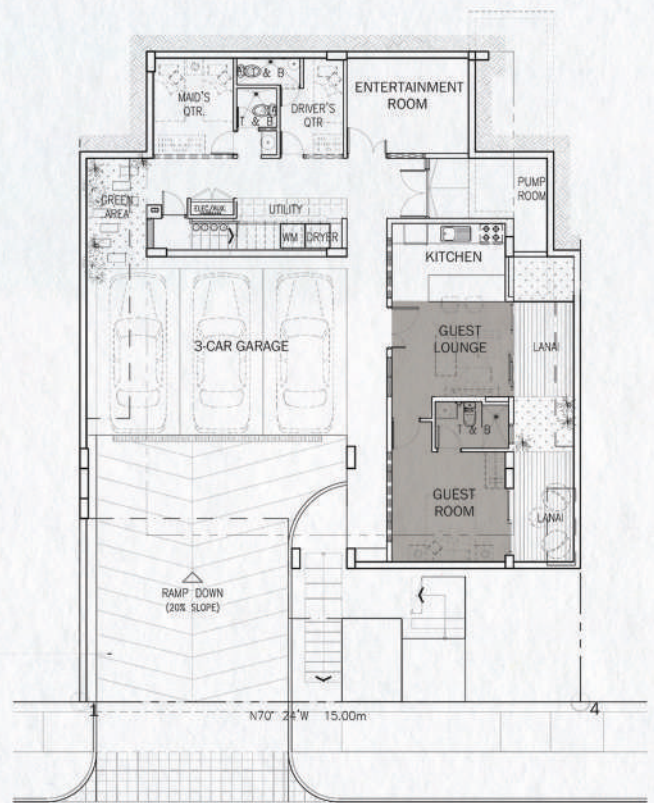
Second Floor Plan

# Bedroom 3





# Guest Room and Lounge



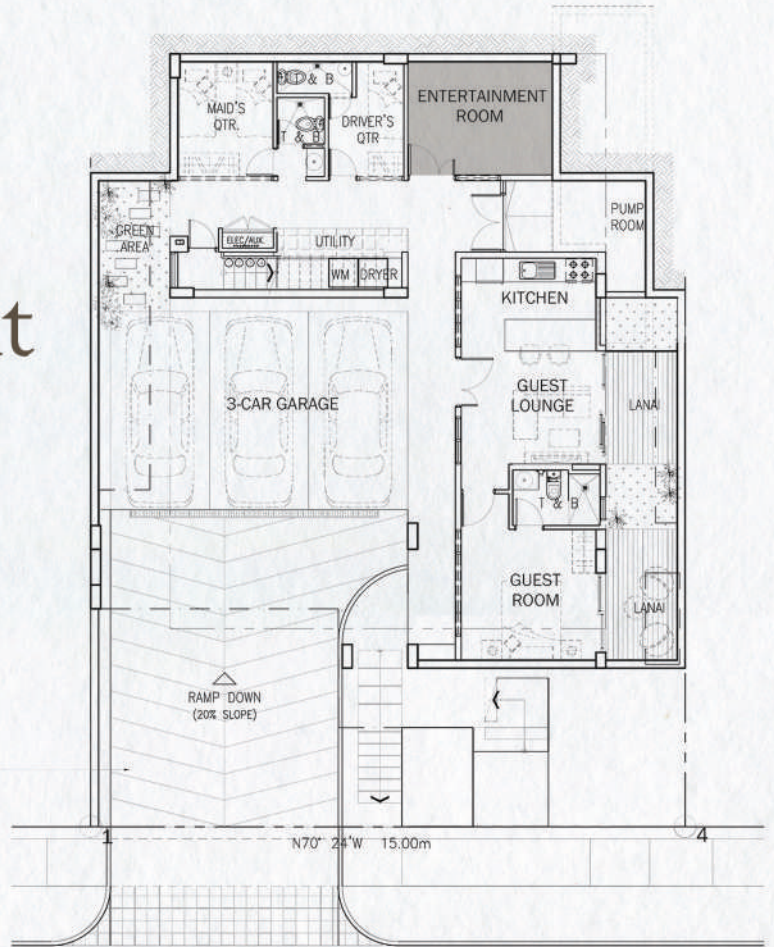
Lower Ground Floor Plan





# The Entertainment Room

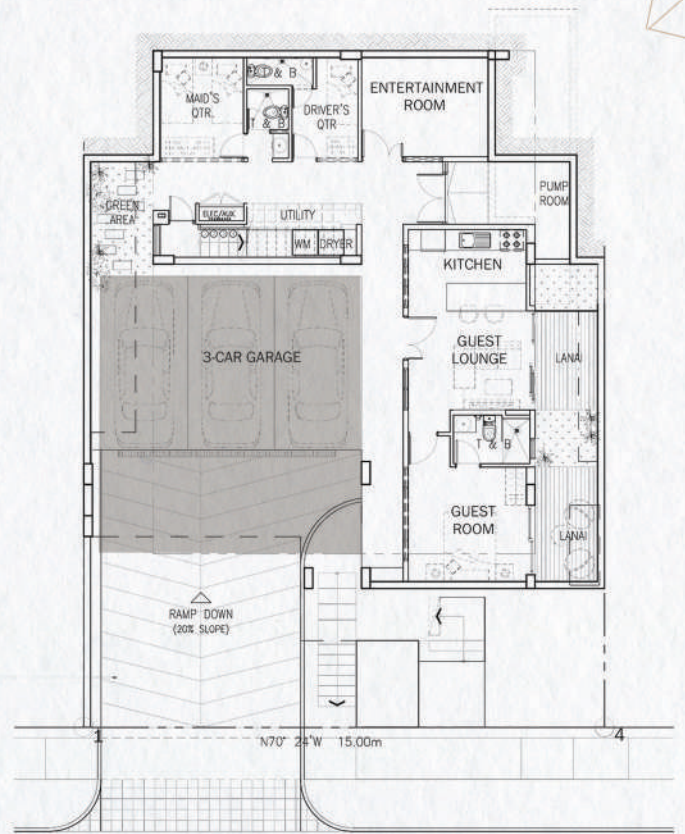
A multifunctional space to watch movies and sports, listen to music, relax, and bond with family and friends.



Lower Ground Floor Plan



# Garage



Lower Ground Floor Plan



With carefully selected high-grade finishes and thoughtful design choices, this timeless home is the perfect retreat for those who appreciate the finer things in life.

## Home Features

Modern Architectural Design

Double-Height Ceilings

Impressively Sized Living Spaces

Seamless Indoor-Outdoor Design

Beautifully Landscaped Pool and Lanai

Reflecting Pond / Koi Pond

2 Living Areas (Formal and Informal)

Show Kitchen

Daily Kitchen

Spacious Master Suite with Walk-In Closet

Junior Suite with mini Walk-In Closet

5 Bedrooms, including an Accessible Bedroom (wheelchair access)

6 Full Bathrooms

Entertainment Room / Office

2 Sizeable Balconies

Separate Helper's and Driver's Quarters, each with own T&B

5-Vehicle Carport

## Fixtures & Finishes

Solid Narra Wood Front Door

High-Grade Porcelain Tiles

3.4-Meter-High Luxurious German uPVC glass windows and sliding doors

12mm-Thick Glass Railing and Canopy

Stone Coated Roofing

Sustainable Bamboo Wood Flooring, Decking and Exterior Wall Cladding

Imported Natural Wood Balcony Wall and Ceiling Cladding

Solid Wood Planks on Main Staircase

Natural Stone Accent on Pool and Falls

Wi-Fi Controlled Pool RGB Lights

Custom-Built Modular Cabinets

Quartz Kitchen Island Countertops

ELBA Kitchen Appliances

GROHE and KOHLER Bathroom Fixtures

DAIKIN Inverter Air Conditioning Units

Quality lighting design and fixtures

Provision for CCTV



SWIMMING POOL

## Live your Best Life

Alabang West boasts a huge clubhouse complex with amenities that include a lap pool, game room, fitness center, badminton and basketball courts, function rooms, cabanas, open space parks, among others.





BASKETBALL COURT



BADMINTON COURT



FUNCTION ROOM



PLAYGROUND



AV ROOM



FITNESS CENTER



GAME ROOM



Clubhouse



Game Room



Fitness Center



Swimming Pools



AV Rooms



Playground



Badminton Court



Basketball Court



Function Rooms

# THE NEIGHBORHOOD

Live the best of all worlds and enjoy easy access to everything Manila and greater Manila has to offer. The luxury of convenience is yours at the **hamilton** home in Alabang West.



Conveniently accessible through the major access points of the South Luzon Expressway-Alabang Exit and the upcoming Daang Hari Exit, your future home's close proximity allows you and your loved ones the luxury of convenience. Navigate quickly around the Metro within minutes and easily access the major business districts of Makati City and Fort Bonifacio.

## NOTABLE DESTINATIONS

### Airport - NAIA 1 | 2 | 3

Estimated: 30 mins. drive

### Bonifacio Global City

Estimated: 35 mins. drive

### Makati Business District

Estimated: 30 mins. drive

### Rockwell Powerplant

Estimated: 40 mins. drive

### Ortigas Business District

Estimated: 40 mins. drive

### North Luzon Expressway

Estimated: 1 hour drive

### South Luzon Expressway

Estimated: 30 mins. drive

#### SCHOOLS

PAREF Woodrose  
De La Salle Zobel  
San Beda College Alabang  
PAREF Southridge

#### TRAVEL TIME

5 mins.  
10 mins.  
15 mins.  
20 mins.

#### COMMERCIAL ESTABLISHMENTS

Alabang West Parade  
Evia Lifestyle Center  
Alabang Town Center  
Molito Complex

1 min.  
5 mins.  
10 mins.  
10 mins.

#### HOSPITAL

Asian Hospital and Medical Center

15 mins.

#### NEARBY NEIGHBORHOODS

Ayala Southvale  
The Enclave Alabang  
Ayala Alabang  
Portofino Heights

3 mins.  
5 mins.  
5 mins.  
5 mins.



## About Top Homes

**Top Homes** brings a new vision to luxury residential living in the Philippines. Founded by a team of highly reputable and experienced real estate professionals, we pride ourselves in selecting and building nothing but top homes that inspire you to unlock your dreams and live your best life ever.




TOP HOMES

YOUR KEY TO YOUR DREAM HOME

Unit 2217, 22nd Floor, High Street Corporate Plaza Tower 1,  
26th St., Fort Bonifacio Taguig City, 1634 Metro Manila, Philippines

0917 681 1188 | [www.tophomes.com.ph](http://www.tophomes.com.ph)

 @officialtophomes

 /officialtophomes